

A satellite-style map of Australia is centered on a dark blue background. The map shows the continent's terrain in shades of brown, tan, and green. The title "Australia's Geography" is overlaid on the map in a large, bold, cyan font with a black outline. The text is centered horizontally and vertically. On either side of the map, there are vertical bars: a thin cyan bar and a wider lime green bar.

Australia's Geography

Standards

SS6G12 The student will be able to locate selected features of Australia.

- a. Locate on a world and regional political-physical map: the Great Barrier Reef, Coral Sea, Ayers Rock, and Great Victoria Desert.

Teachers

Print off the following page for each student. They should complete the chart while discussing the presentation.

Australian Physical Features



Directions: Fill in each square with details about each physical feature, where it's located, and a colored illustration.

<p style="text-align: center;">Great Barrier Reef</p> <p>Description:</p> <p>Location:</p> <p>Illustration:</p>	<p style="text-align: center;">Ayers Rock</p> <p>Description:</p> <p>Location:</p> <p>Illustration:</p>
<p style="text-align: center;">Great Victoria Desert</p> <p>Description:</p> <p>Location:</p> <p>Illustration:</p>	<p style="text-align: center;">Coral Sea</p> <p>Description:</p> <p>Location:</p> <p>Illustration:</p>

A satellite-style map of Australia is centered on a dark blue background. The map shows the continent's terrain in shades of brown, tan, and green. The title text is overlaid on the central part of the continent. The background is framed by vertical bars: a wide yellow bar on the left and right, and a narrower cyan bar on the left and right.

Australia's Geography

Australia

- Australia is the world's smallest and flattest continent.
- It has some of Earth's oldest and least fertile soils.
- Only Antarctica receives less rainfall than some parts of Australia!
- It's surrounded by the Indian and Pacific Oceans.
- Commonwealth of Australia also includes Tasmania, an island south of the mainland.

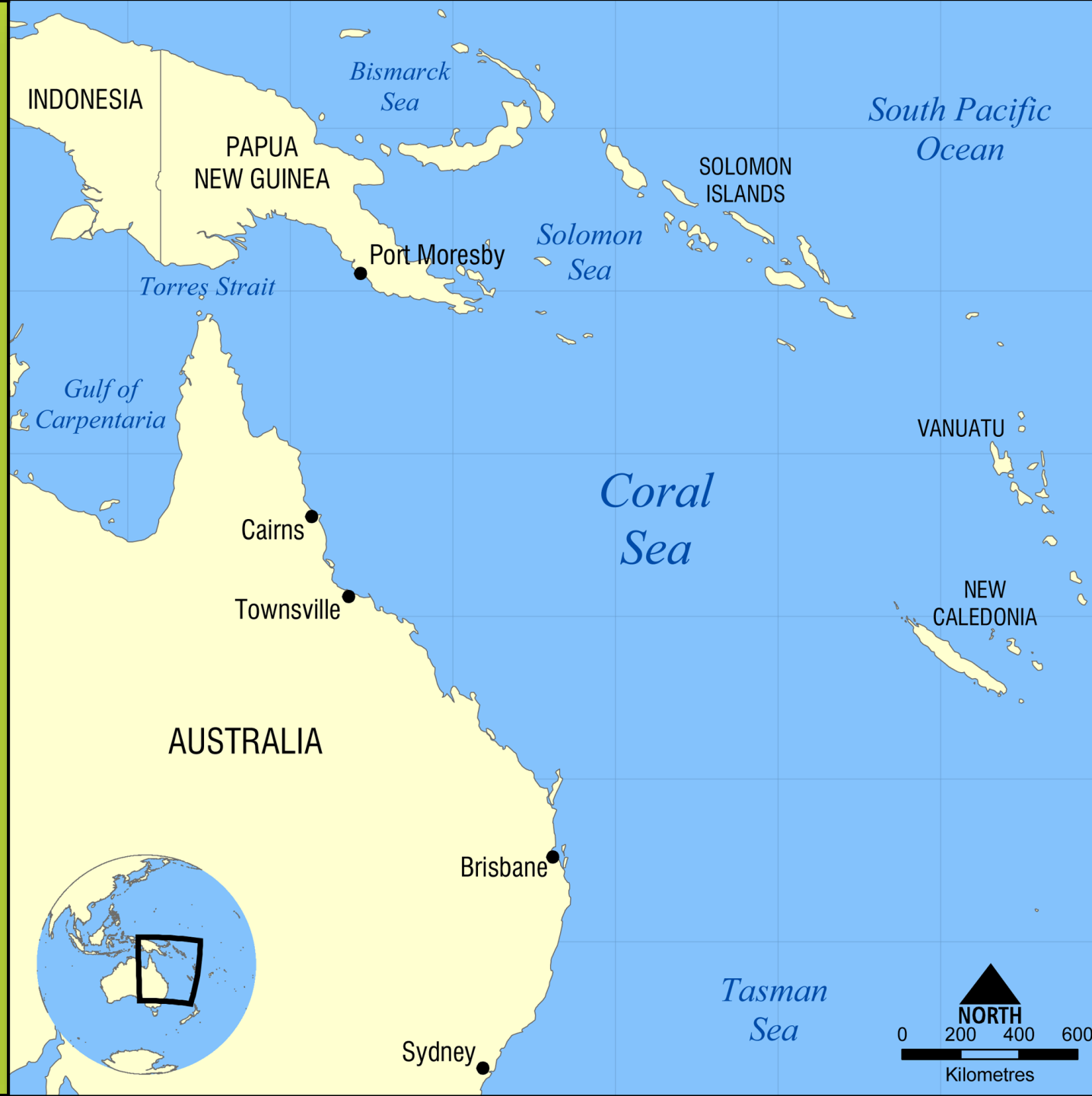


Australia's Climate

- Huge desert plains stretch across the country's middle.
 - Central Australia's climate is hot and dry.
- There are milder climates along the southeastern and southwestern coasts.
 - Most Australians live in the southeastern coastal region.

Coral Sea

- It's off the northeast coast of Australia, part of the Pacific Ocean.
- When the earth's crust moved millions of years ago, it created the Coral Sea and the Great Dividing Range (largest mountain range in Australia).
- Coral Sea islands are scattered over thousands of miles of ocean.
 - No one lives on the islands except for a small group of weather specialists.







Great Barrier Reef

- This is the world's largest coral reef.
 - It's over 1,200 miles long!
- It lies off the northeast coast of Queensland, in the Coral Sea.
- It contains an amazing variety of marine life, including the world's largest collection of coral.
 - 400 types of coral, 1,500 species of fish, & 4,000 mollusks (snails, clams, octopi, & squid) are found here.
 - It's also home to rare species like the sea cow and the large green turtle.











Ayers Rock

- A huge, reddish rock in the center of Australia.
 - It's located very close to the geographic center of the continent.
- It's a **monolith**, which is a single, large rock sticking out of the earth.
- It appears reddish because its iron content "rusts" at the surface.
- It's nearly 12 stories high and almost 6 miles wide!





Ayers Rock

- Aborigines call it “Uluru”, which is its official name.
- A European surveyor visited the rock in 1873 and named it after Sir Henry Ayers, an English government official in South Australia.
- In 1950, Australia created Uluru-Kata Tjuta National Park around Ayers Rock.
 - It is located in the southwest corner of the state called Northern Territory.



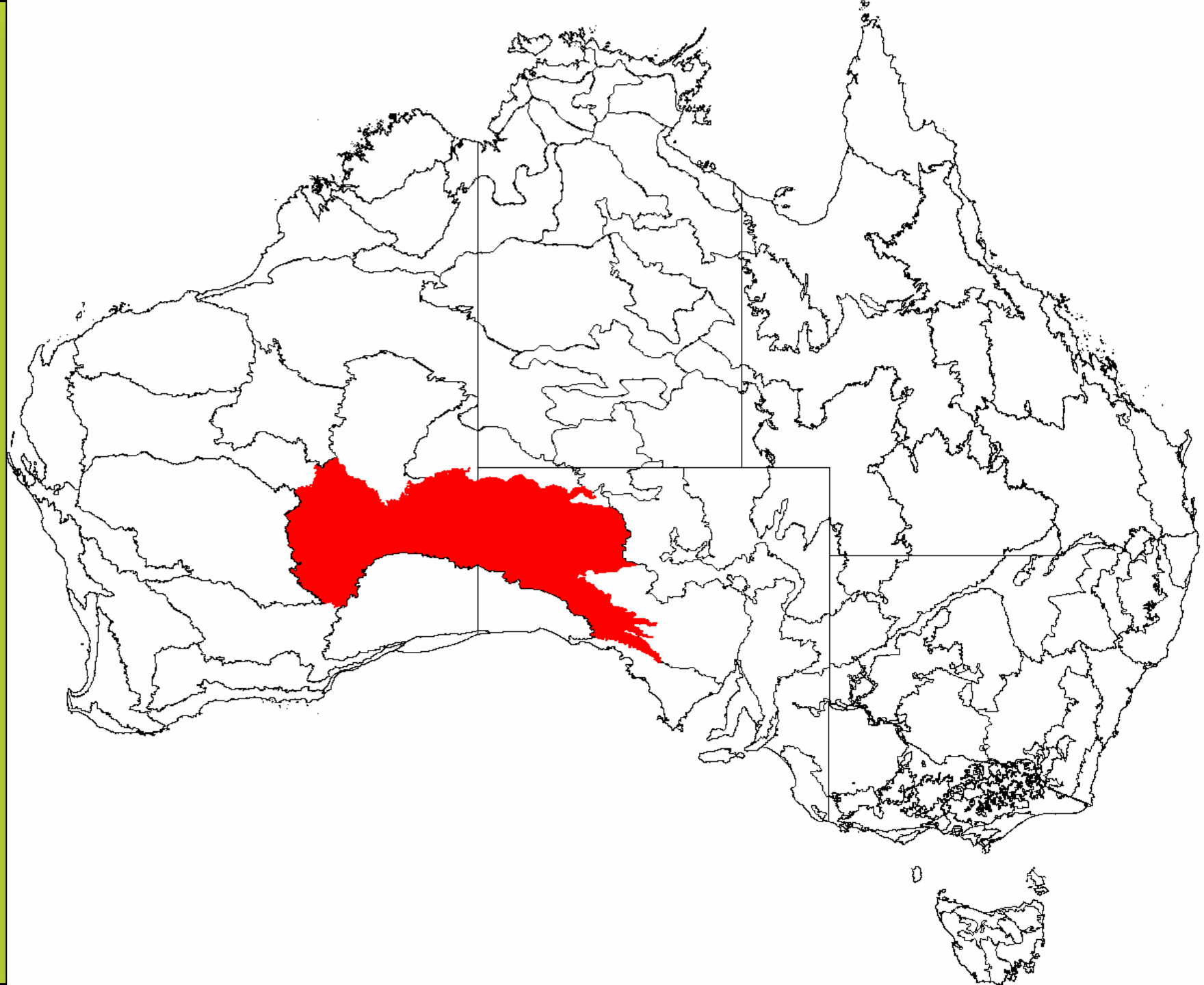


Great Victoria Desert

- The first Europeans to cross the desert named it after British Queen Victoria in 1875.
- It's 160,000 miles long, and is a protected wilderness area.
- Very few Australians live here because it's too hot and dry.

Great Victoria Desert

- The desert stretches through the states of South Australia and Western Australia.
- It receives only 8 to 10 inches of rain each year, and it never snows!
- There are some grasslands in the desert along with the sand hills.







Political and Physical Features of Australia

Part One: Use a pen to label the following 6 states and 2 territories* on the map of Australia.

- New South Wales
- Queensland
- South Australia
- Tasmania
- Victoria
- Western Australia
- Northern Territory*
- Canberra* (Australian Capital Territory)

Next, use a **BLUE** marker to outline the political border of each state. Then, use a **RED** marker to outline the political border of each territory.

Part Two: Use a pen to label the following seven physical features on the map.

- Coral Sea
- Ayers Rock (Uluru)
- Great Victoria Desert
- Great Barrier Reef
- Great Dividing Range
- Indian Ocean
- Pacific Ocean

1. Color the Pacific Ocean and the Indian Ocean **DARK BLUE**.
2. Color the Coral Sea **LIGHT BLUE (or TEAL)**.
3. Draw a **RED** box where the Great Barrier Reef is located.]
4. Draw triangle symbols around the Great Dividing Range and color them **GREEN**.
5. Draw a large rectangle to represent Ayers Rock and color it **RED-ORANGE**
6. Color the Great Victoria Desert **BROWN**.







An Alien Adventure to Australia!



Greetings, Earthlings!

We are friendly beings from the planet Murople in the galaxy of Cheezie Wheezie. Since we are new to your little planet, would you mind giving us a quick tour? We'd LOVE to visit all 7 of your continents, but we only have time to venture to the smallest continent this week.

Will you help us get to Australia?...

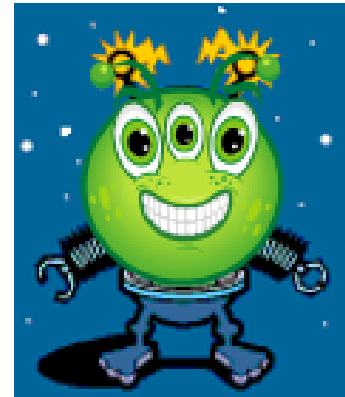


- Thank you for agreeing to help us! We realize that it takes 23 hours and \$2,440 for you humans to get to Australia, so an actual trip to the land down under is out of the question.
- The alternative solution is for you to create a map that will show us the major points of interest in Australia, then we can find them ourselves.



Your Task:

- Use www.umapper.com to create a map of Australia that includes the following features:
 - Ayers Rock
 - Great Barrier Reef
 - Great Victoria Desert
 - Coral Sea
- Place “pushpins” on the map of Australia in the spots where the features are located.
- You will need to include a description and an image for each feature.



Teachers

If you cannot use computers (or the site is unavailable), I have included another option for the Alien Adventure project.

Your Task:

- Create a map of Australia that includes the following features:
 - Ayers Rock
 - Great Barrier Reef
 - Great Victoria Desert
 - Coral Sea
- Draw pushpins on the map of Australia in the spots where the features are located.
- Outside the map (in the margins), you will need to include a description and an image for each feature.



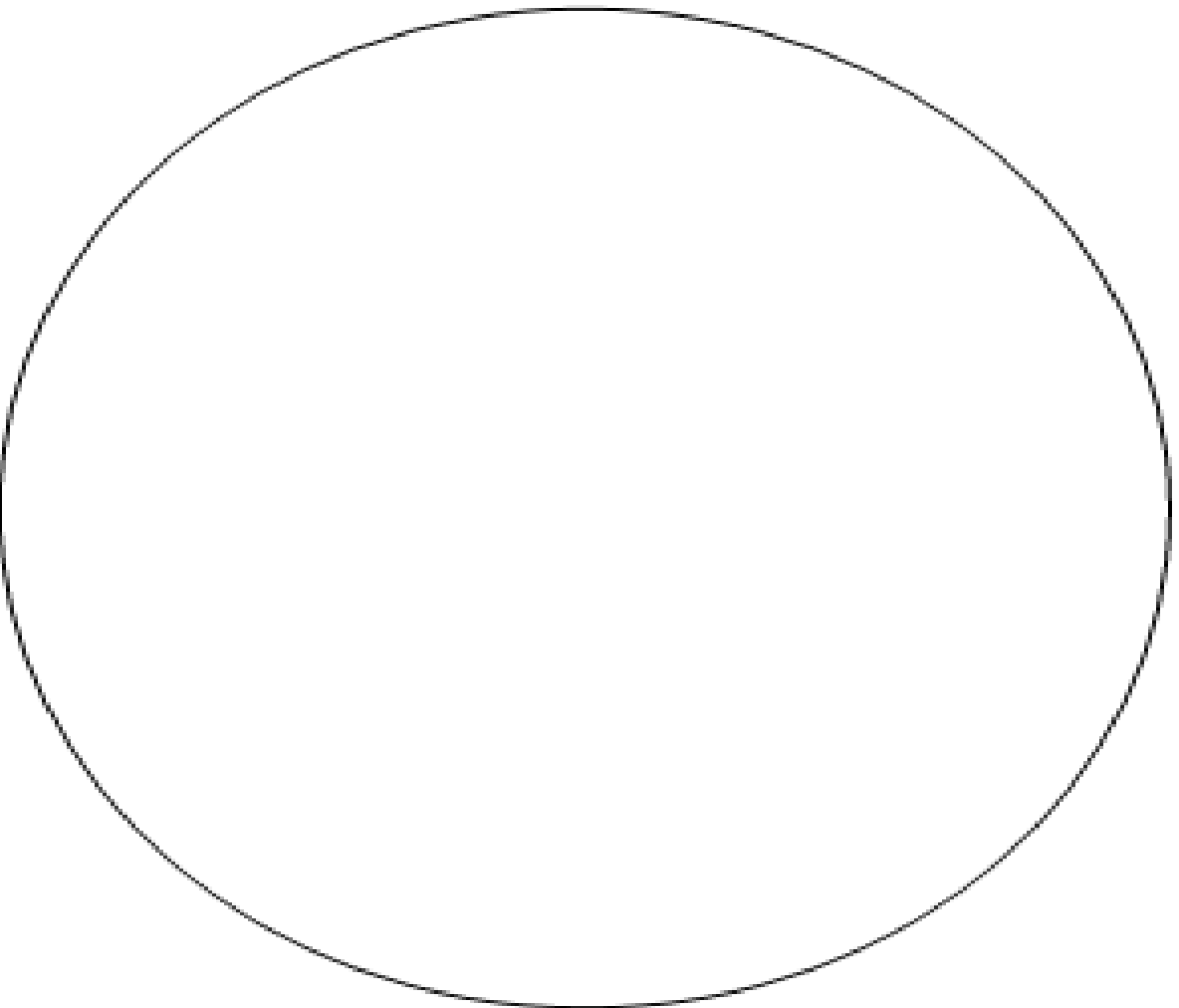


Name: _____

Design-A-Plate

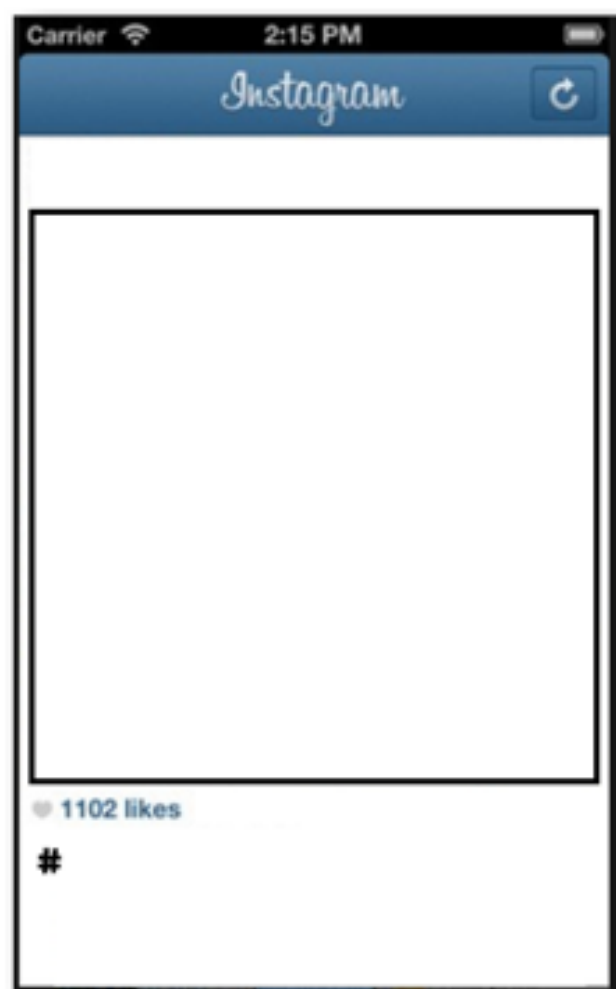
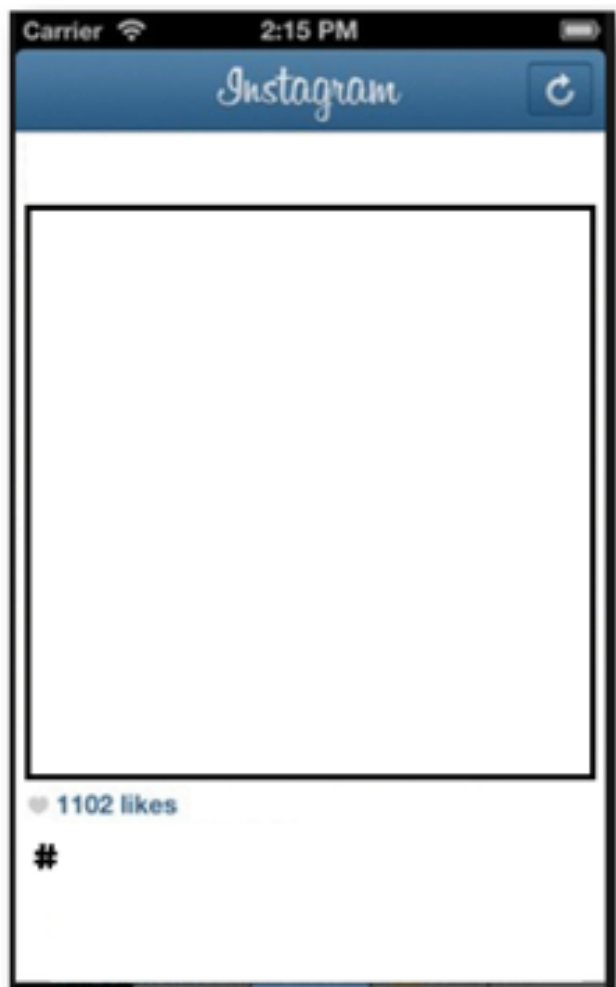
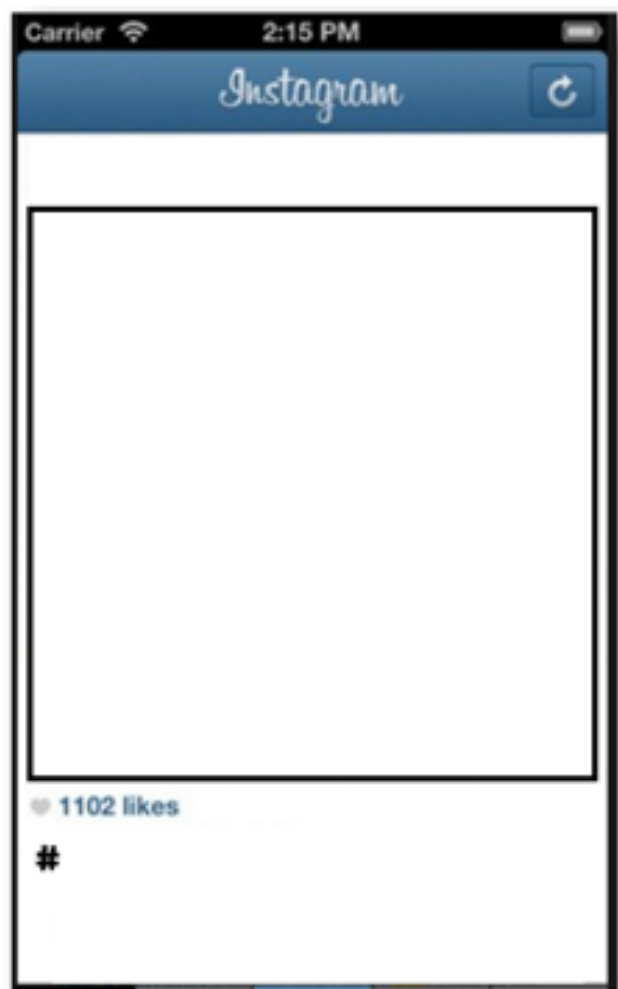
There is a new Australian restaurant in our town! The restaurant owner is planning to serve yummy Australian foods, like Down Under Cheese Hoppers and Sydney Spicy Shrimp. Even though he has an awesome Australian menu lined up, he has one small problem...He doesn't have any plates to serve the food on! The owner needs your help in designing plates that could be used in his restaurant. He wants you to create a plate that includes the important physical features of Australia: Ayers Rock, Great Barrier Reef, Coral Sea, and the Great Victoria Desert. Feel free to add any additional illustrations to your plate design—the more Australian, the better! The plate should be colorful, informative, and creative. 😊

Rough Sketch of Plate Design:



Instagram Your Trip!

Directions: Imagine that you just took a trip around Australia. What are three noteworthy things that you would want to take a picture of and post on Instagram for all of your followers to see? Make sure you include a #_____ so that they know what you're picture is showing. Yes, you can use filters when coloring your pictures! Be creative!





Australia Edible Map TEST

As we study Australia, you will be required to learn several important physical features on the map. However, this time we are going to make AND eat our test instead of writing on it! Here are the directions:

1. You will work in groups of two or three. Write your partners' names below:

2. EACH PERSON needs to memorize the following map items:

Coral Sea	Ayers Rock
Great Victoria Desert	Great Barrier Reef
Great Dividing Range	Indian Ocean
Pacific Ocean	Canberra

3. You will use one rectangular baked cookie cake (buy one roll of cookie dough, roll it out, and bake it on a cookie sheet).

4. You will use icing to "draw" Australia on your cookie cake.

5. Each group must decide on decorations to represent the different map items! (Example: Hershey's Kisses for mountains.) Be creative with your map items; and remember—you get to eat what you use on your map! 😊

6. On the day of the activity, each group will make their edible maps from MEMORY and I will test each group on their knowledge. At the end of class, the group will share their cookie map!

ACTIVITY DATE:

I give permission for _____ to participate in the edible map activity.

*If you are not comfortable with your child participating, an alternate assignment can be given.

Parent signature: _____

What Items Are We Bringing?

*Most importantly, who will bring in the cookie cake? _____

Physical Feature	Item We're Using	Group Member Responsible
Coral Sea		
Great Victoria Desert		
Great Dividing Range		
Ayers Rock		
Canberra (Australia's capital)		
Pacific Ocean		
Indian Ocean		
Great Barrier Reef		



Teachers

Thank you for downloading this file. I hope you enjoy using it with your students, and I can't wait to read your feedback in my TPT store! 😊

- For more social studies materials, please visit my store:
<http://www.teacherspayteachers.com/Store/Brain-Wrinkles>
- I teach 6th grade Language Arts and Social Studies in Georgia, so my products are aligned with Common Core (LA) and Georgia Performance Standards (SS).

© Copyright 2013. Brain Wrinkles. All rights reserved. Permission is granted to copy pages specifically designed for student or teacher use by the original purchaser or licensee. The reproduction of any other part of this product is strictly prohibited. Copying any part of this product and placing it on the Internet in any form (even a personal/classroom website) is strictly forbidden. Doing so makes it possible for an Internet search to make the document available on the Internet, free of charge, and is a violation of the Digital Millennium Copyright Act (DMCA).

Credits:

All photos were found via Creative Commons and labeled for reuse.

- Fonts:



- Backgrounds & Graphics:

